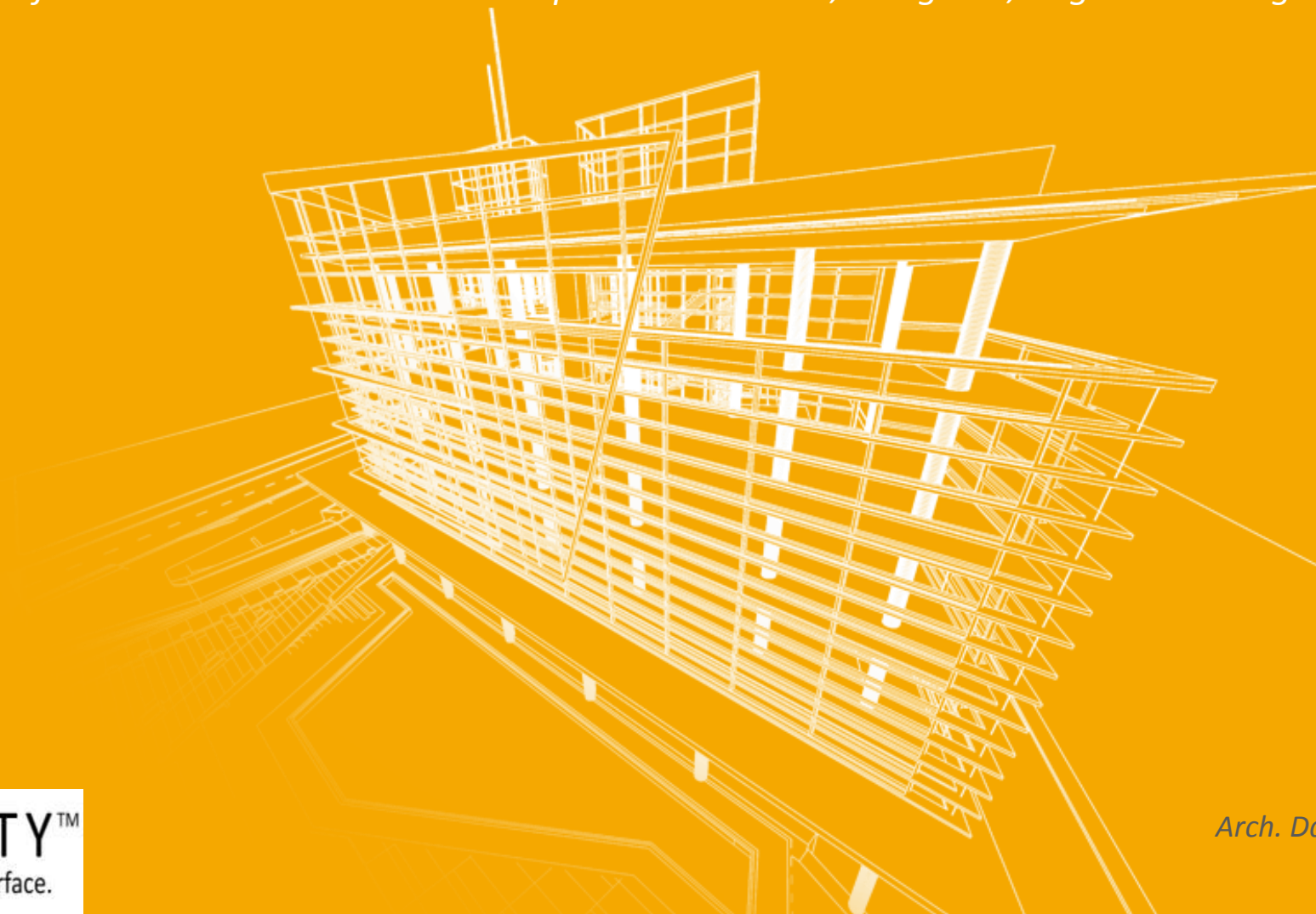


INFINITY - PROJECT DIVISION



The experience of our in-house team that accompanies architects, designers, engineers and general contractors



NEW GENERATION, ESTABLISHED LEGACY



Infinity derives from decades of experience accumulated by **Concorde Group**, the **largest Italian manufacturer of ceramic** floor and wall coverings for architecture and interior design, founded in 1969 in Fiorano.



PROJECT DIVISION



Infinity Project Division is the specialized division for the design of:

- VENTILATED FACADES
- GLUED FACADES
- RAISED FLOORS

Specialist technical help at all stages of the job:

from the initial sketches to the installation of the product on site.



PROJECT DIVISION - SERVICES



FOR THE CUSTOMERS:

- Supports for special applications in 5 continents
- Ability to enter ins specific project, with the safety to be followed by the Infinity's technicians

FOR THE DESIGNERS:

- Support to choosing the best system for each single application
- Support to making specs
- Design and calculation support

FOR THE GENERAL CONTRACTORS AND INSTALLERS:

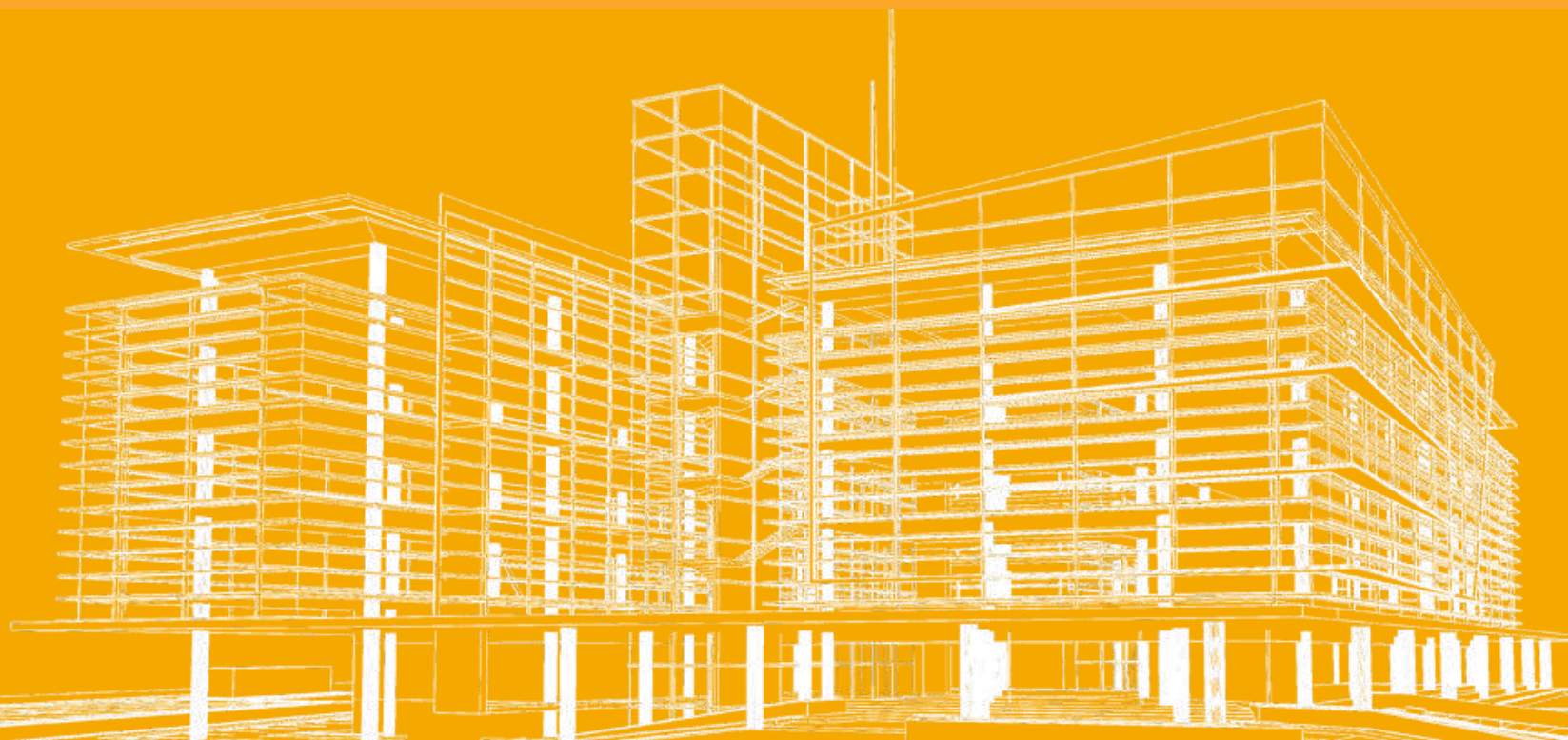
- Take off and quantities/costs evaluation
- Job site assistance





VENTILATED FAÇADES

The design solution that maximizes benefits and aesthetic appearance



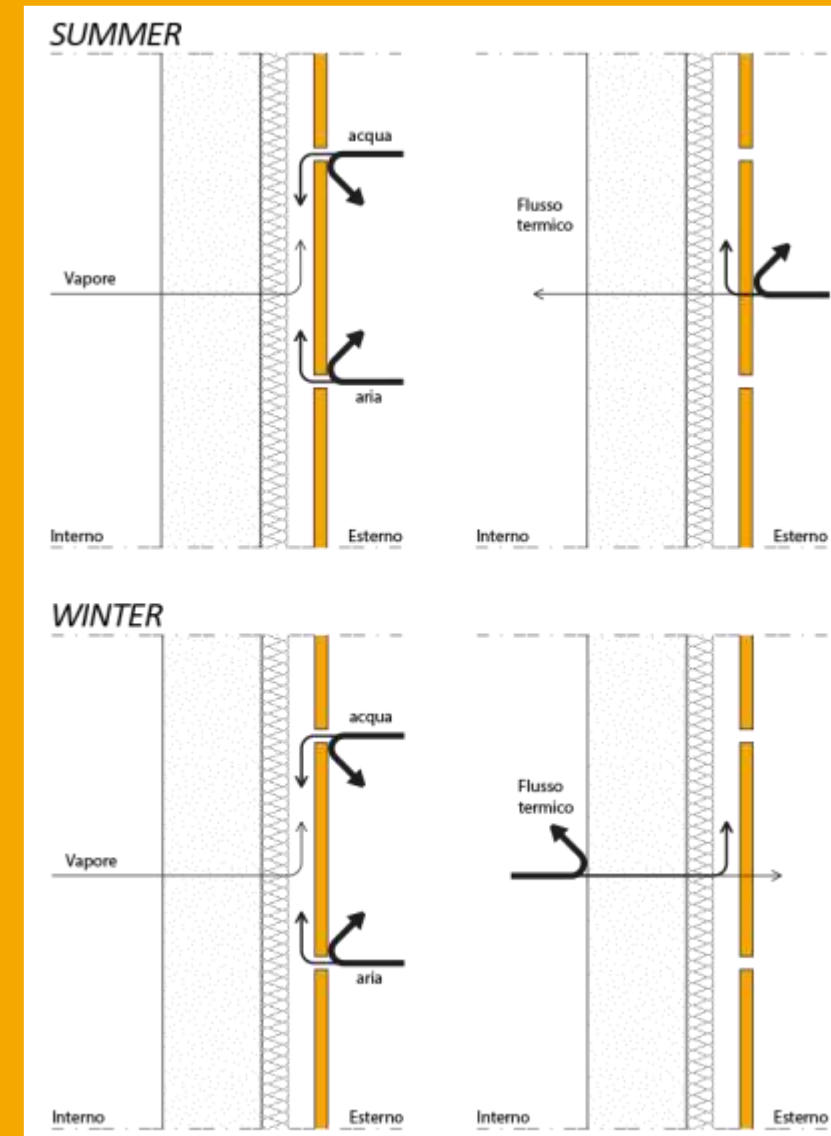
INFINITY™ project
The engineered surface. **division**



VENTILATED FACADE _ HOW IT WORKS



The UNI 11018 standards define the ventilated façade as a type of rain screen barrier where the **cavity between the siding and the wall** is designed in such a way that the air within it can flow naturally thanks to the principal called “**chimney effect**”, which notably improves the overall thermal-energy performance of the building.



VENTILATED FACADE _ REASON WHY



Up to 30% improved energy efficiency

The Infinity ventilated façades are an investment for the building that is easily offset considering the energy savings it brings



Durability

The useful life of the façade can be compared to that of the building itself, and it does not require specific maintenance



Sustainable and efficient

Sustainability and efficiency are guaranteed thanks to the lowered energy consumption and zero costs in maintenance



VENTILATED FACADE _ REASON WHY



Fireproof

The systems with mechanical anchoring exclusively use non-combustible materials



Moisture protection

The ventilation within the cavity wall helps disperse the interstitial moisture of the exterior wall assemblies



Protection from weather

The cladding slabs are not subject to any kind of deterioration caused by weathering and at the same time protect the layers behind, extending their useful life



VENTILATED FACADE _ REASON WHY



Comfort

The ventilated façade is a guarantee of thermal-hygroscopic comfort and acoustic insulation



Absence of cracks or crazing

Infinity ventilated façades are designed to permit all kinds of thermal dilation between the materials. Furthermore, cladding raised off the wall surface avoids all types of efflorescence



Architectural inspiring

Thanks to the vast selection of colours and finishes, Infinity makes for punctual and high-performing architectural projects



VENTILATED FACADE _ REASON WHY



Ecological

All ceramic and metallic components are recyclable and during their life cycle, which is longer than the average for construction materials, they do not emit VOC or other harmful substances



Renovation

The ventilated façade system is easy to apply to existing buildings, improving appearance and energy performance



Complete design freedom

Infinity slabs are produced using the highest quality standards and, thanks to their size, they lend themselves for use in all types of residential and non-residential construction



ADVANTAGES OF THE PRODUCT

All Infinity products have structural, aesthetic and functional characteristics that make them a unique option for furnishings and indoor and outdoor floor and wall coverings.

The slabs are resistant to wear and tear and scratches, and are easy to clean. As the years pass, they do not show the unattractive signs of wear typical of resins or other natural materials, and are not affected by heat or acids.



VENTILATED FACADE_INFINITY SLABS



INFINITY SLABS vs ALUMINIUM PANELS



Excellent
mechanical
characteristics



Preserve
technical/
aesthetic
qualities during
time



Available in
a variety of
colours and
patterns



VENTILATED FACADE_INFINITY SLABS



INFINITY SLABS vs GFRC PANELS



Excellent
mechanical
characteristics



Maintenance
and cleaning
not necessary



Lower water
absorption -
frost
resistance



Preserve
technical/
aesthetic
qualities during
time



More
aesthetic
possibilities



VENTILATED FACADE_INFINITY SLABS



INFINITY SLABS vs NATURAL STONES



Lower thickness
and weight



Excellent
mechanical
characteristics



Lower water
absorption -
frost
resistance



Maintenance
and cleaning
not necessary



Preserve
technical/
aesthetic
qualities
during time



VENTILATED FACADE _INFINITY SLABS



INFINITY SLABS vs NATURAL STONES

Data	Sandstone	Gneiss	Quarzite	Granite	Travertine	INFINITY SLAB
Density	2460 kg/m ³	2630 kg/m ³	2660 kg/m ³	2750 kg/m ³	2410 kg/m ³	2370 kg/m³
Standard Thickness	30 mm	20 mm	30 mm	40 mm	30 mm	20 mm
Water absorption	1,60%	0,34%	0,30%	0,30%	1%	0,05%
Flexion resistance	12,7 N/mm ²	28,4 N/mm ²	47,9 N/mm ²	15,10 N/mm ²	11,8 N/mm ²	51,7 N/mm²

	Water absorption (%) ISO 10545-3	Flexion resistance (N/mm ²) ISO 10545-4	Deep abrasion resistance (mm ³) ISO 10545-6	Chemical resistance	Stain resistance	Protection surface treatment after installation	Color variation due to UV ray
INFINITY porcelain stoneware	0.03 – 0.06	48 – 53	125 – 140	Excellent	Excellent	Not necessary	Not Affected
Travertine	1 – 2.5	10 – 15	250 – 350	Poor	Poor	Reccomended	Affected
Granite	0.2 – 0.5	10 – 15	250 – 500	Good	Good	Reccomended	Affected
Marble	0.3 – 2.0	10 – 15	500 – 700	Poor	Poor	Reccomended	Affected
Stone	0.5 – 2.0	10 - 35	350 – 900	Medium	Medium	Reccomended	Affected

VENTILATED FACADE SYSTEMS

Systems for 6mm thickness slabs



PREFABRICATION ON ALUMINIUM VERTICAL PROFILE

Using specific chemical adhesives, the Infinity slabs are pre-assembled onto **aluminium profiles** that have been specifically shaped to house concealed mechanical brackets and vertical supports that guarantee the safety of the system in all environmental conditions.



PREFABRICATION ONTO PANEL

The stoneware slab is pre-assembled by gluing and pressing it onto a panel made up with a modified polymer “core” and by a steel sheet. The final thickness of **18mm** makes it suited to the construction of angular elements and monoliths for stunning architectural and aesthetic impact.



PREFABRICATION ON AN ALUMINIUM FRAME: CLOSED-JOINT SYSTEM

The system is notable for its appealing aesthetics, achieved thanks to the ability of closing all the spaces between the Infinity slabs. The cladding panels are pre-assembled at the manufacturing plant onto an aluminium framework that increases their resistance and allows them to be fixed to the wall.

VENTILATED FACADE _ SYSTEMS

1 _ Prefabrication on profiles

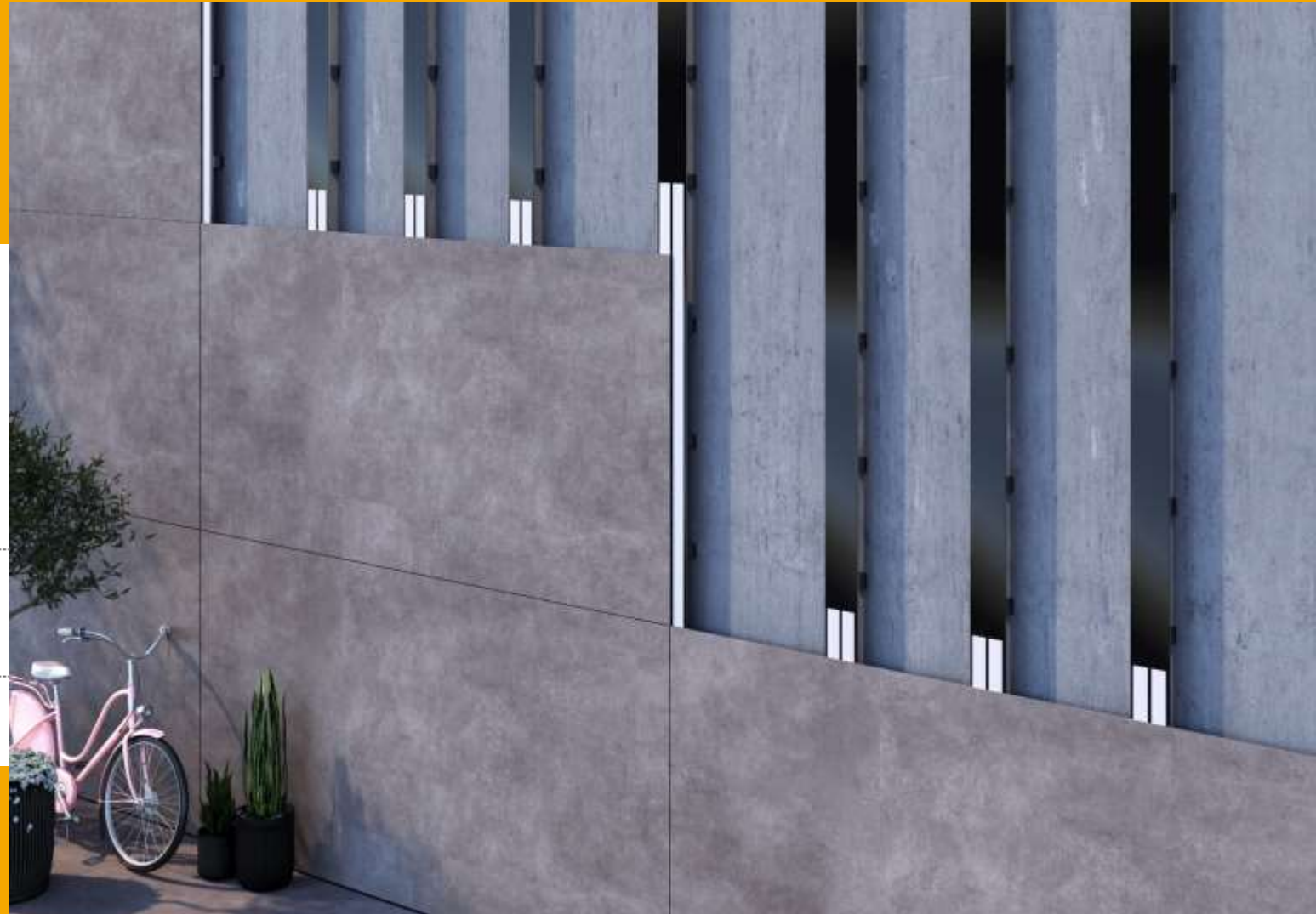
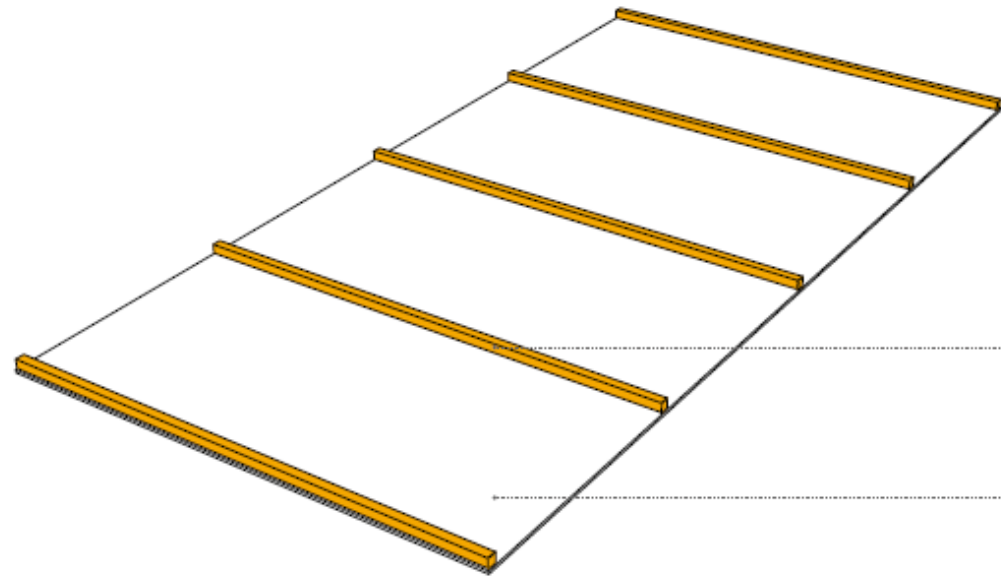


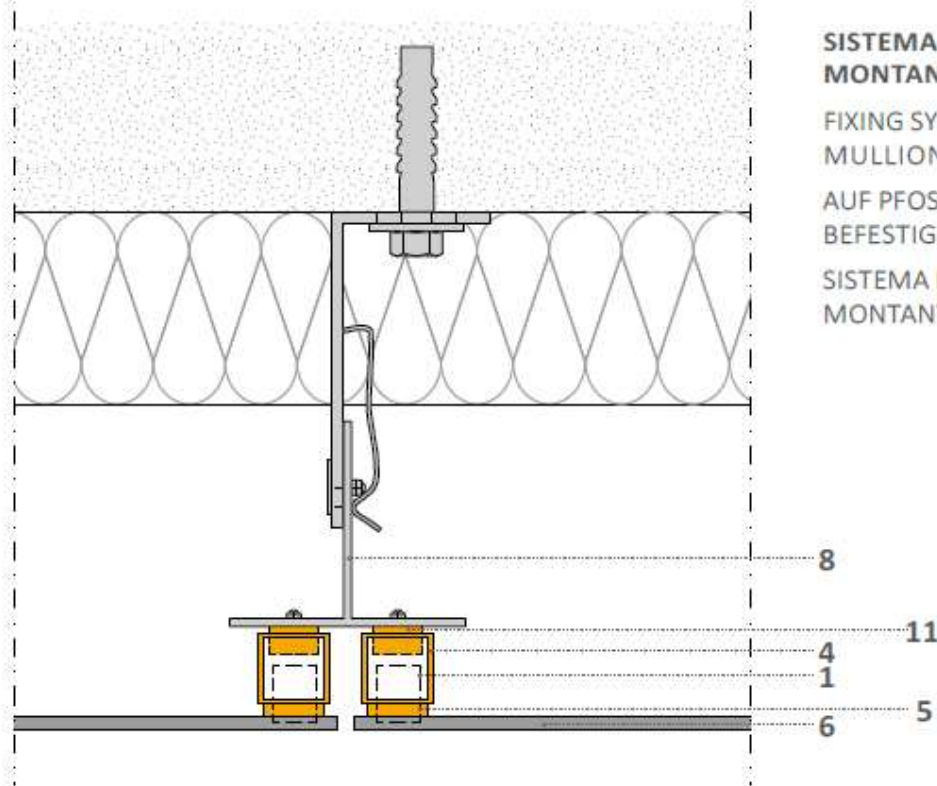
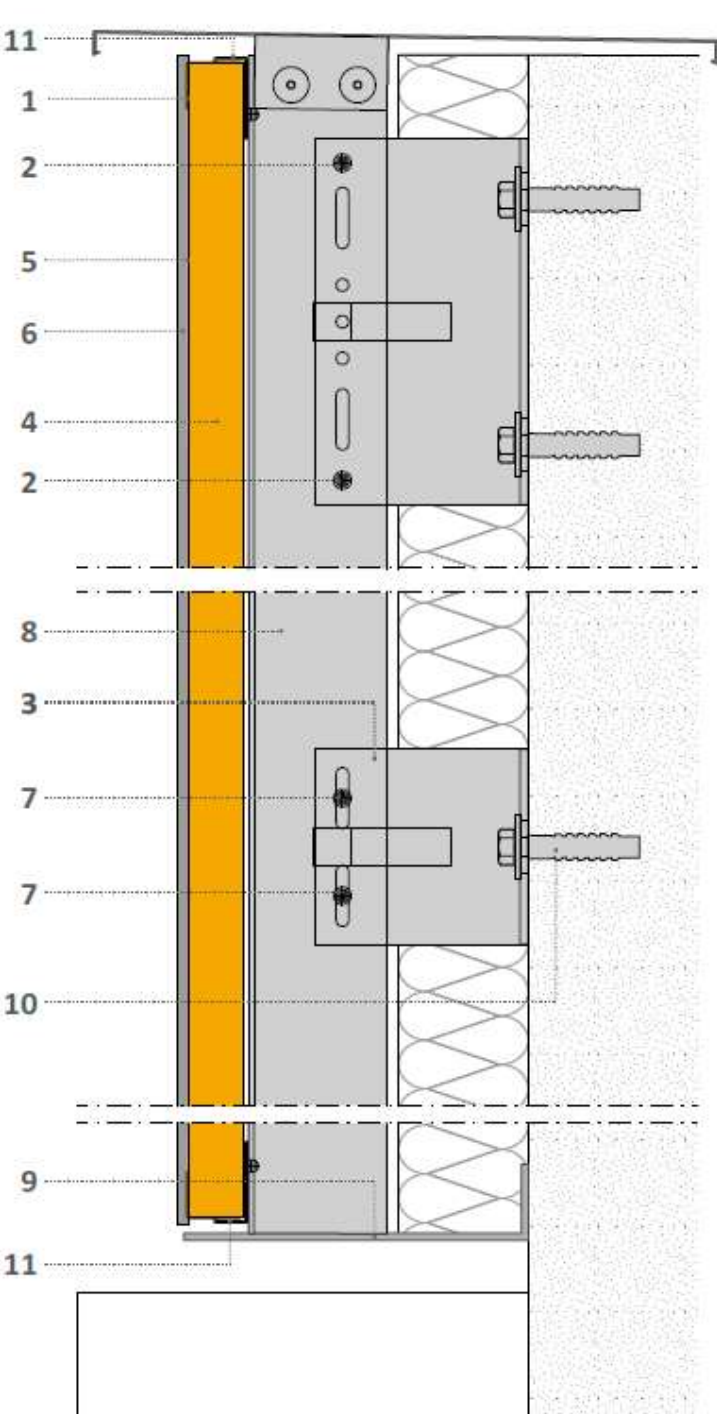
1- BONDING PROCEDURE

Prefabrication in the manufacturing plan

2- INSTALLATION

Only mechanical fixations are used onside





SISTEMA FISSAGGIO PREASSEMBLATO SU MONTANTI

FIXING SYSTEM PREASSEMBLED ONTO VERTICAL MULLIONS

AUF PFOSTEN VORMONTIERTES BEFESTIGUNGSSYSTEM

SISTEMA DE FIJACIÓN PREENSAMBLADO EN MONTANTES

1. **Mechanical safety hook** | Gancio meccanico di sicurezza | Mechanischer Sicherheitshaken | Gancho mecánico de seguridad
2. **TL Rivet (Fixed point)** | Rivetto TL (Punto fisso) | Niet TL (Fixpunkt) | Remache TL (Punto fijo)
3. **L Bracket** | Staffa L | L-Bügel | Estribo L
4. **Preassembled profile** | Montante preassemblato | Vormontierter Pfosten | Montante preensamblado
5. **Structural Adhesive** | Collante strutturale | Struktureller Kleber | Adhesivo estructural
6. **Infinity slab 6mm** | Lastra Infinity 6mm | Infinity-Platte 6 mm | Placa Infinity 6 mm
7. **Rivet TL (sliding point)** | Rivetto TL (Punto scorrevole) | Niet TL (Gleitpunkt) | Remache TL (Punto deslizante)
8. **Vertical profile T** | Profilo montante T | Profil Pfosten T | Perfil montante T
9. **Perforated sheet** | Scossalina microforata | Mikroperforiertes Anschlussblech | Guardaguas microperforada
10. **Dowel** | Tassello | Dübel | Taco
11. **Mechanical anchors** | Aggancio meccanico | Mechanischer Sicherheitshaken | Enganche mecánico

VENTILATED FACADE _ SYSTEMS

1 _ Prefabrication on profiles



TEST RESULTS

On the basis of the test performed and the result obtained, the test sample, comprising an external wall cladding called "Infinity ventilated façade with slab 160x320x0,6cm with mesh (Substructure axial distance 780mm)", is assigned the performance as regards the tests specified in the following table:

Test Type Tipologia di test Prüfungsart Tipo de prueba	Test Standard Test Standard Standardtests Prueba estándar	Results Risultati Ergebnisse Resultados
RESISTANCE TO WIND LOAD Resistenza al carico del vento Windlastwiderstand Resistencia a la carga del viento	ETAG 034	> 5000 Pa
RESISTANCE TO BODY IMPACT Resistenza all'impatto con i corpi esterni Widerstandsfähigkeit gegen Stöße mit externen Körpern Resistencia al impacto con cuerpos externos	ETAG 034	CATEGORY III

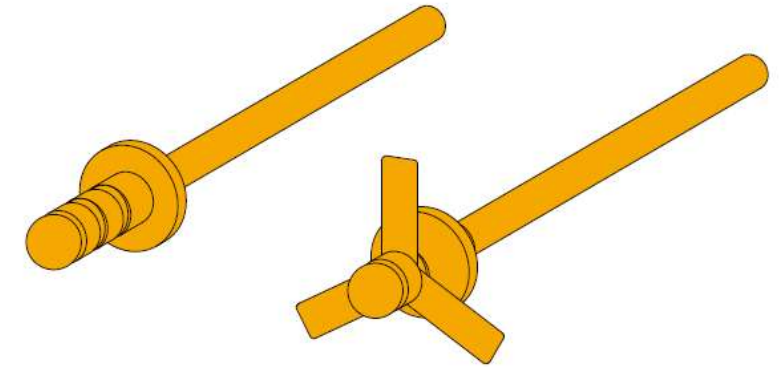


VENTILATED FACADE _ SYSTEMS

2 _ Prefabrication on Panel

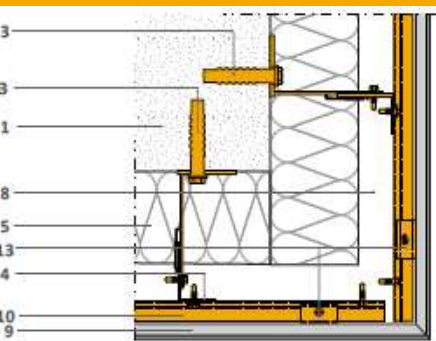


TYPE OF ATTACHMENT: EXPANSION RIVET
TIPOLOGIA DI FISSAGGIO: RIVETTO AD ESPANSIONE
BEFESTIGUNGSART: SPREIZNIET
TIPO DE FIJACIÓN: REMACHE DE EXPANSIÓN

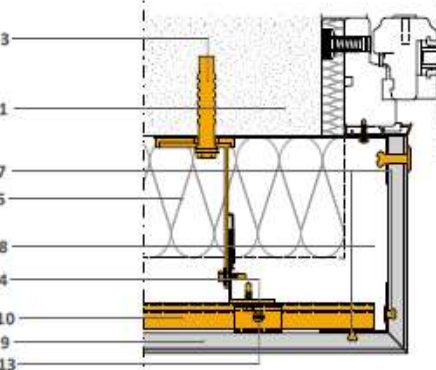


	Vertical spacing	Horizontal Spacing
	Passo verticale Senkrechter Abstand Paso vertical	Passo orizzontale Waagerechter Abstand Paso horizontal
Anchorage on the slab Ancoraggio su lastra Verankerung auf der Platte Fijación sobre placa	50 - 80 cm	40 - 60 cm
Horizontal Profile Profilo Orizzontale Horizontales Profil Perfil Horizontal	50 - 80 cm	
Vertical Profile Montanti Pfosten Montante		60 - 80 cm
Bracket Staffe Bügel Etribo	50 - 80 cm	60 - 80 cm

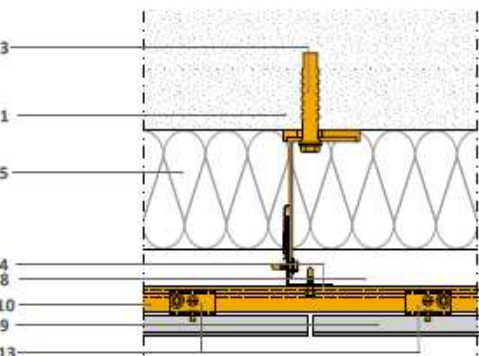




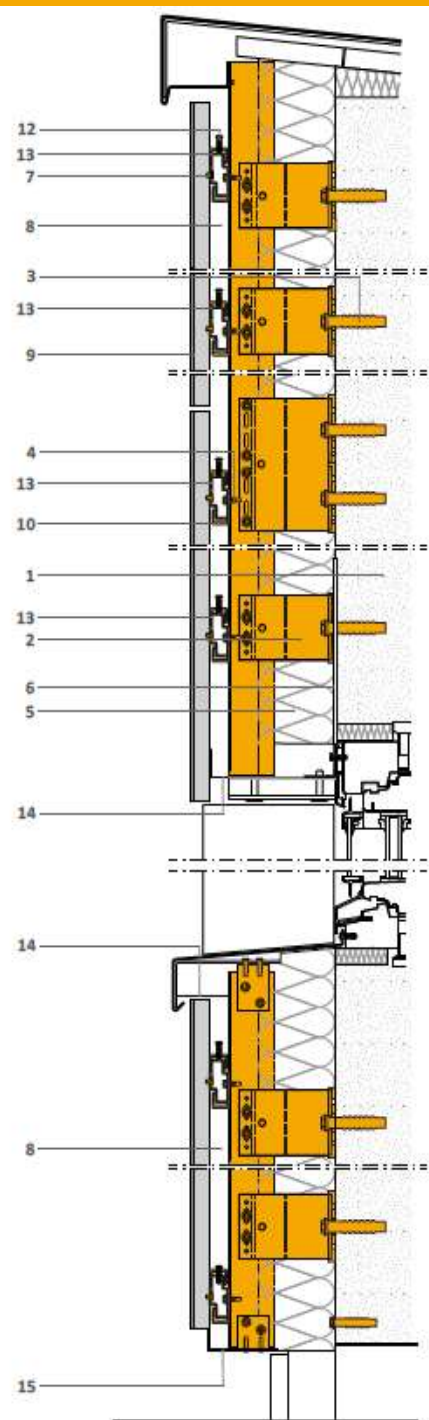
HORIZONTAL SECTION ON ANGLE
SEZIONE ORIZZONTALE SULL'ANGOLO
HORIZONTALSCHNITT DER ECKE
SECCIÓN HORIZONTAL DE ANGLULO



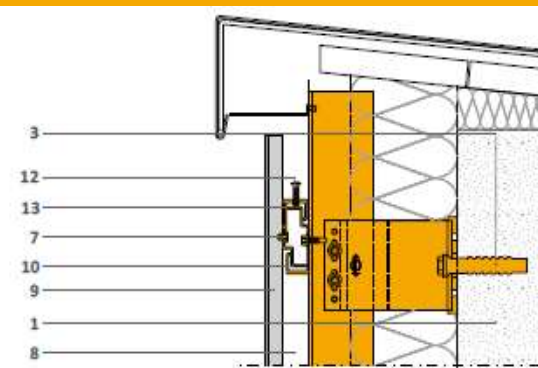
HORIZONTAL SECTION - WINDOW
SEZIONE ORIZZONTALE FINESTRA
HORIZONTALER QUERSCHNITT FENSTER
SECCIÓN HORIZONTAL VENTANA



HORIZONTAL SECTION
SEZIONE ORIZZONTALE
HORIZONTALSCHNITT
SECCIÓN HORIZONTAL



VERTICAL SECTION
SEZIONE VERTICALE
VERTIKALSCHNITT
SECCIÓN VERTICAL



VERTICAL SECTION - WINDOW
SEZIONE VERTICALE FINESTRA
VERTIKALER QUERSCHNITT FENSTER
SECCIÓN VERTICAL VENTANA

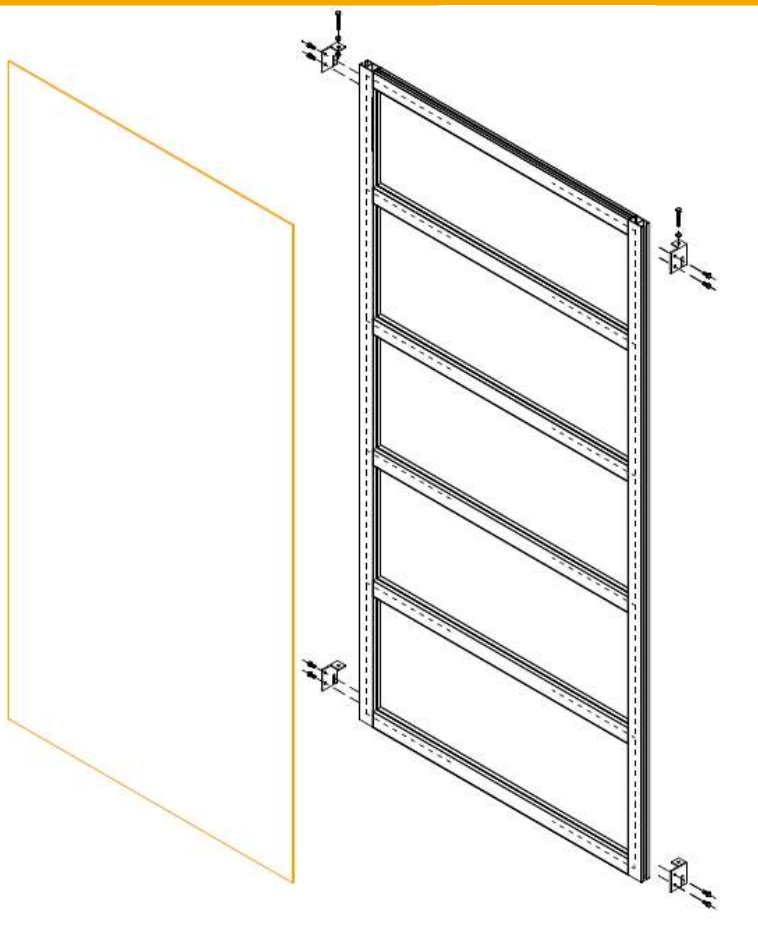
1. **Base** | Sottofondo | Untergrund | Soporte subyacente
2. **Bracket** | Staffa | Bügel | Estribo
3. **Dowel** | Tassello | Dübel | Taco
4. **Self-drilling screw** | Vite autoforante | Selbstschneidende Schraube | Tornillo autoperforante
5. **Insulation** | Isolante | Isolierung | Aislamiento
6. **Insulation fixing** | Fissaggio dell'isolante | Befestigung der Isolierung | Fijación del aislamiento
7. **Rivet** | Rivetto | Niet | Remache
8. **Ventilation Gap** | Camera di ventilazione | Lüftungskammer | Cámara de ventilación
9. **Preassembled infinity panel** | Pannello infinity preassemblato | Vormontierte Infinity-Platte | Placa infinity preensamblada
10. **Horizontal Profile** | Profilo Orizzontale | Horizontales Profil | Perfil Horizontal
11. **Fixing Screw** | Vite di fissaggio | Befestigungsschraube | Tornillo de fijación
12. **Adjustment screw** | Vite di regolazione | Stellschraube | Tornillo de regulación
13. **Fastener** | Graffa | Klammer | Clip
14. **Additional profile for Air Inlet** | Profilo Aggiuntivo per ingresso aria | Zusatzprofil für Lufteinlass | Perfil adicional para la entrada de aire
15. **Drilled Profile** | Profilo Forato | Perforiertes Profil | Perfil perforado



CORNER SOLUTION
SOLUZIONE D'ANGOLO
ECKLÖSUNG
SOLUCIÓN DE ÁNGULO

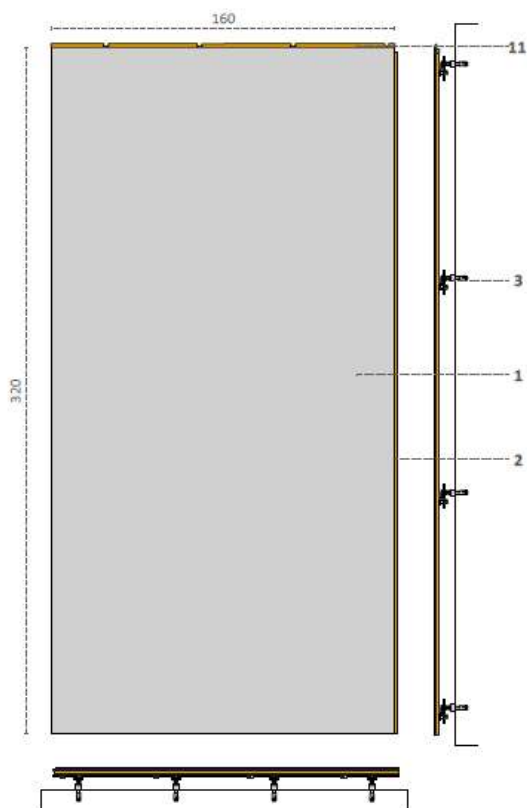
VENTILATED FACADE _ SYSTEMS

3 _ Prefabrication on Frame



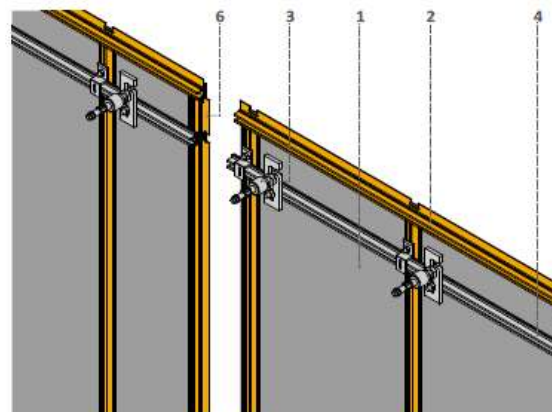
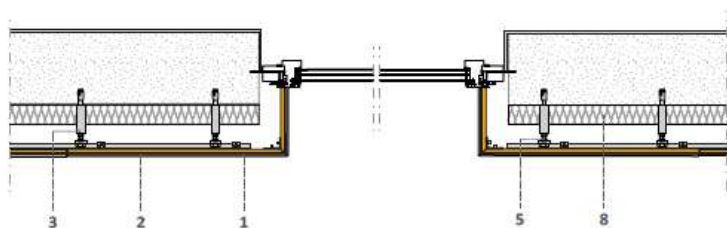
INFINITY™ project
The engineered surface. **division**

03.8.3 Closed joint system: prefabrication on an aluminium frame

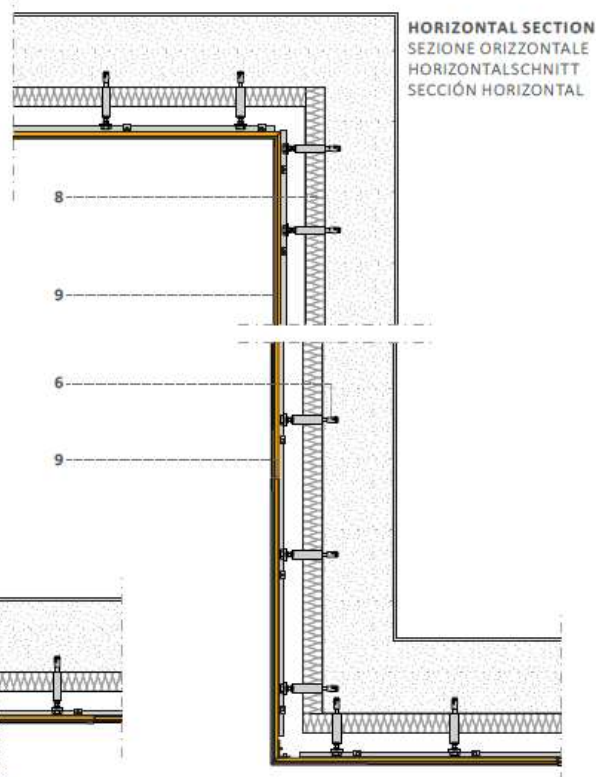


SLAB ELEVATION
PROSPETTO DELLA LASTRA
VORDERANSICHT DER PLATTE
ALZADO DE LA PLACA

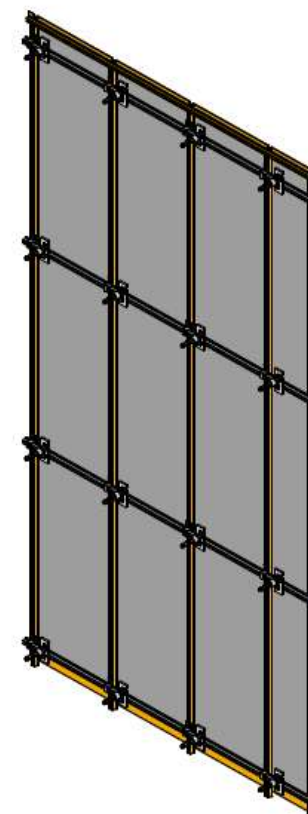
HORIZONTAL SECTION
SEZIONE ORIZZONTALE
HORIZONTALSCHNITT
SECCIÓN HORIZONTAL



DETAIL OF ATTACHMENT BETWEEN THE SLABS
DETTAGLIO FISSAGGIO TRA LE LASTRE
DETAIL DER BEFESTIGUNG ZWISCHEN DEN PLATTEN
DETALLE DE FIJACIÓN ENTRE LAS PLACAS



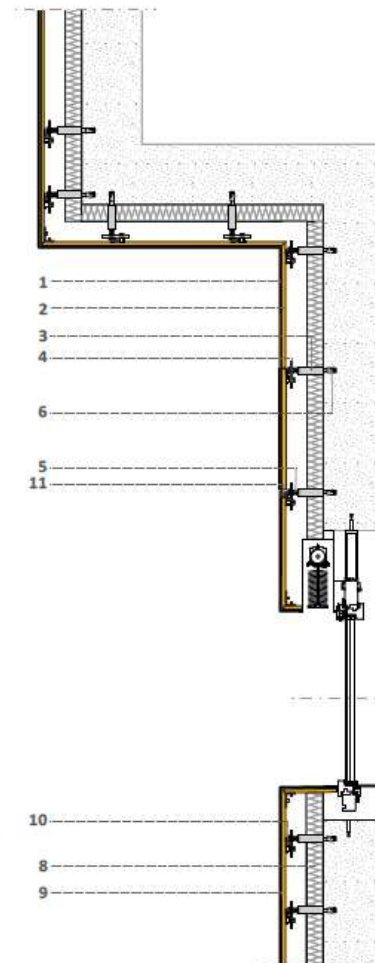
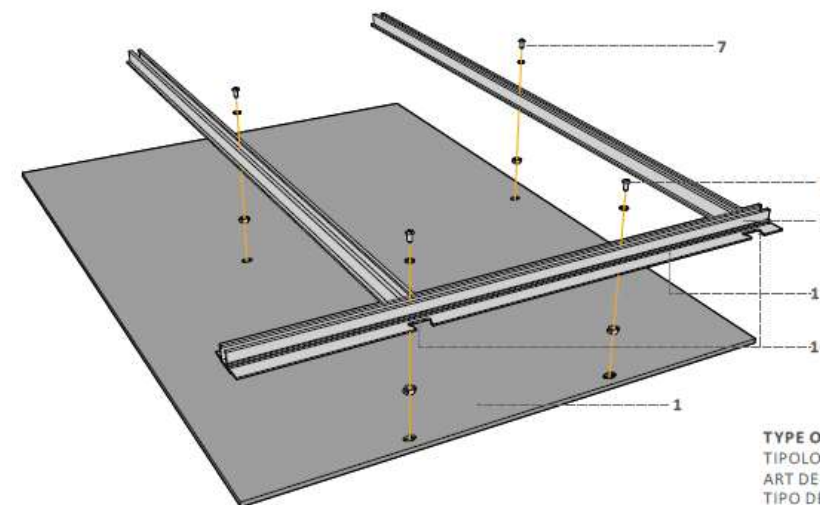
HORIZONTAL SECTION
SEZIONE ORIZZONTALE
HORIZONTALSCHNITT
SECCIÓN HORIZONTAL



1. **Infinity slab** | Lastra infinity | Infinity-Platte | Placa Infinity
2. **Preassembled aluminium profile** | Profilo in alluminio preassemblato | Vormontiertes Aluminiumprofil | Perfil de aluminio preensamblado
3. **Wall anchoring** | Ancoraggio a parete | Verankerung an der Wand | Anclaje de pared
4. **Horizontal profile fixed to the wall** | Profilo orizzontale fissato a al muro | An der Wand befestigtes horizontales Profil | Perfil horizontal fijado en la pared
5. **Threaded adjustment bar** | Barra filettata di regolazione | Reguliergewindestange | Varilla roscada de regulación
6. **Dowel** | Tassello | Dübel | Fijación del aislamiento
7. **Anchorage on panel** | Ancoraggi su Pannello | Verankerungen auf platte | Fijaciones sobre panel
8. **Insulating panel** | Pannello isolante | Isolierplatte | Panel aislante
9. **Preassembled infinity panel** | Pannello Infinity preassemblato | Vormontierte Infinity-Platte | Placa Infinity preensamblada
10. **Male-female coupling** | Aggancio maschio-femmina | Steckverbindung | Enganche macho-hembra
11. **Closing profile of the joints** | Profilo di chiusura delle fughe | Fugenabschlussprofil | Perfil de cierre de las juntas

AXONOMETRIC DIAGRAM OF THE PRE-ASSEMBLED STRUCTURE AND SYSTEM OF WALL ANCHORAGE

SCHEMA ASSONOMETRICO DI STRUTTURA PREASSEMBLATA E SISTEMA DI ANCORAGGIO A PARETE
AXONOMETRISCHESDIAGRAMMDERVORMONTIERTEN STRUKTUR UND DES WANDBEFESTIGUNGSSYSTEMS
ESQUEMA AXONOMÉTRICO DE ESTRUCTURA PREENSAMBLADA Y DE SISTEMA DE FIJACIÓN EN LA PARED



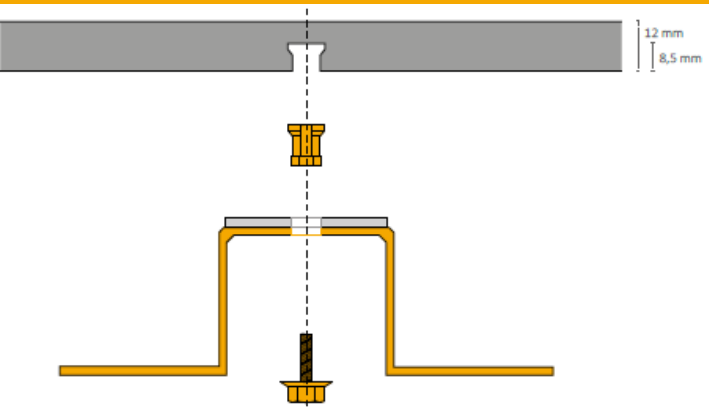
VERTICAL SECTION
SEZIONE VERTICALE
VERTIKALSCHNITT
SECCIÓN VERTICAL

TYPE OF SAFETY DRILL-HOLE
TIPOLOGIA DI FORO DI SICUREZZA
ART DER SICHERHEITSÖFFNUNG
TIPO DE ORIFICIO DE SEGURIDAD



VENTILATED FACADE SYSTEMS

System for 12mm thickness slabs

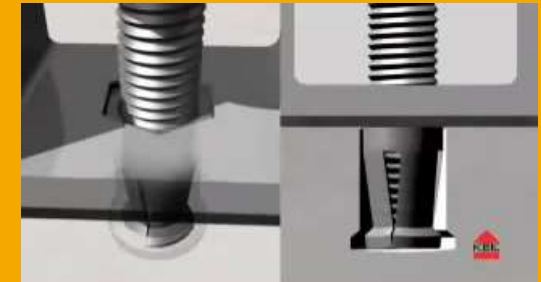
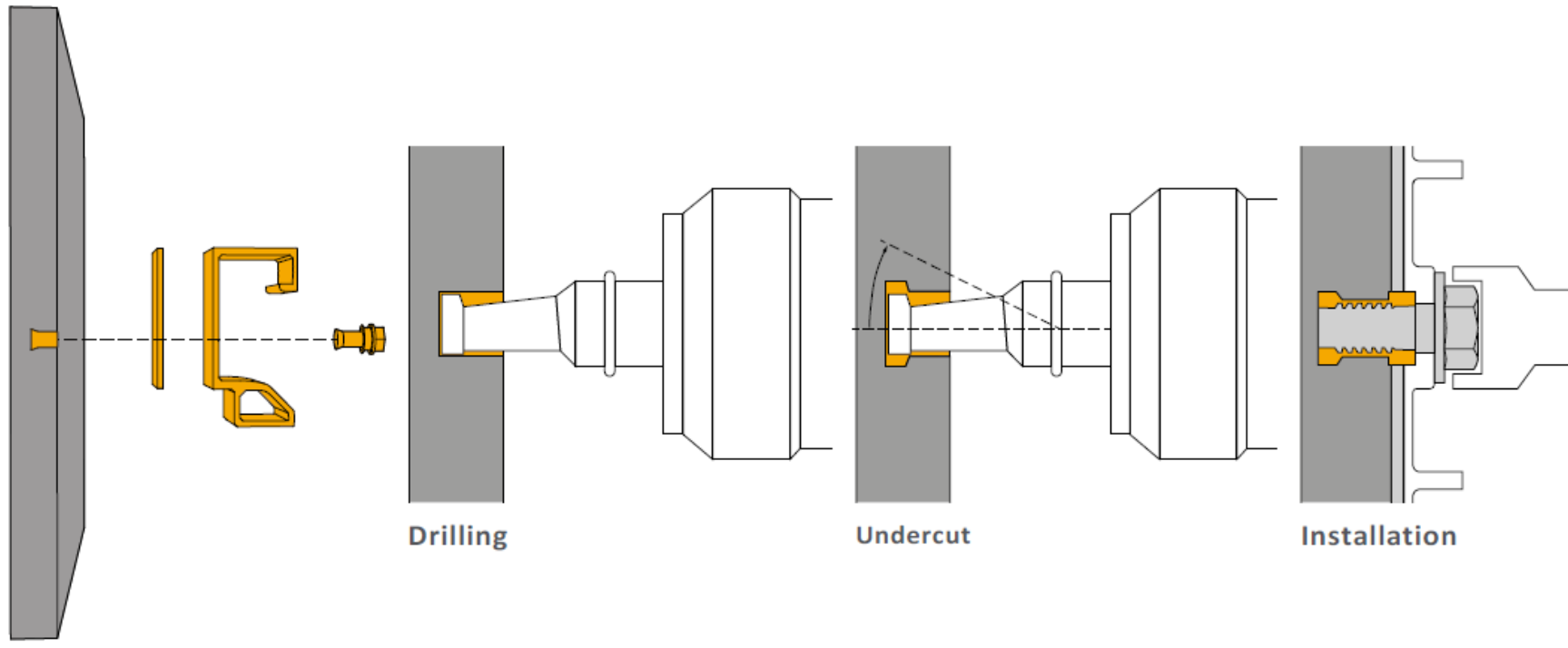


VENTILATED FACADE SYSTEMS

System for 12mm thickness slabs

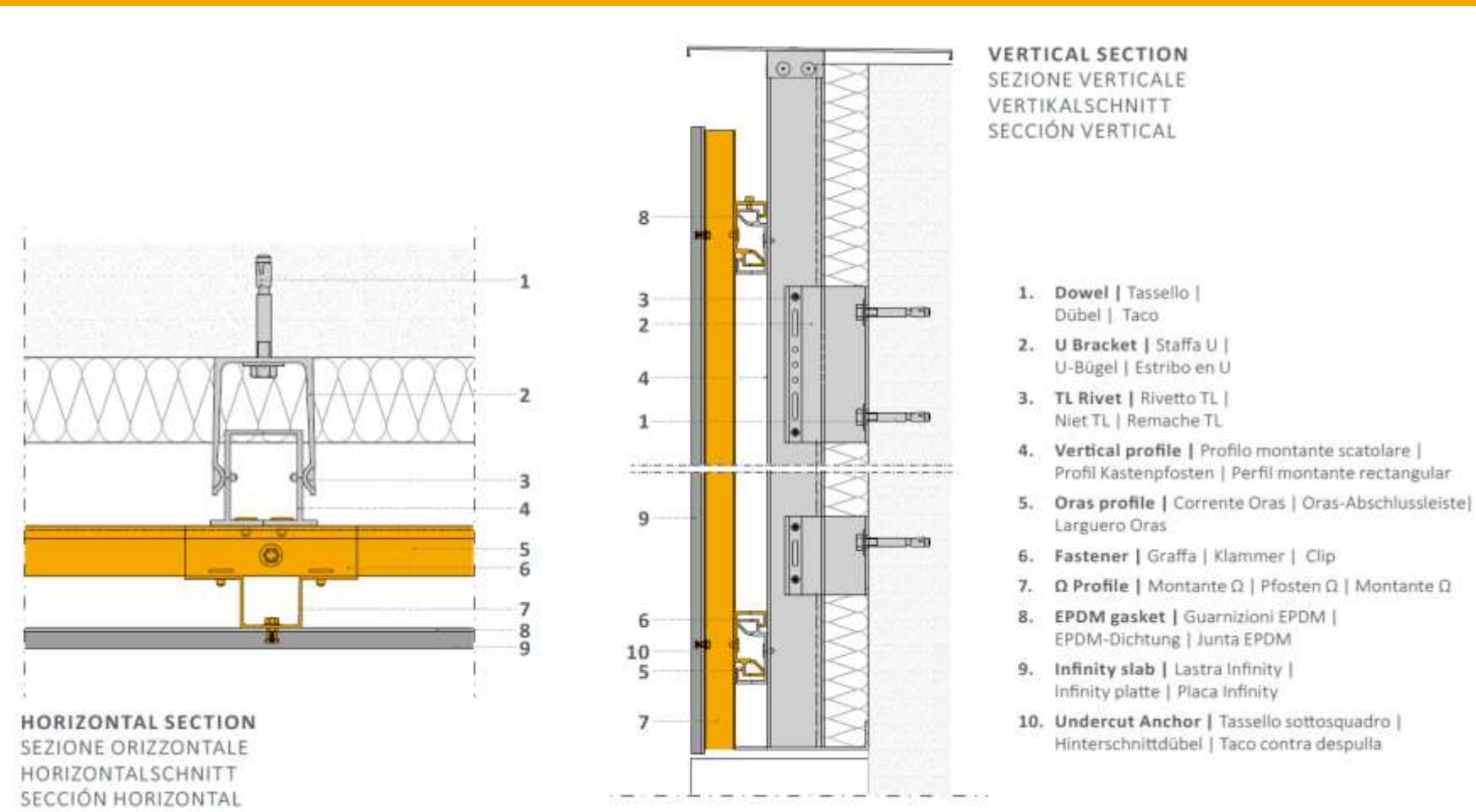


DRILLING PROCEDURE

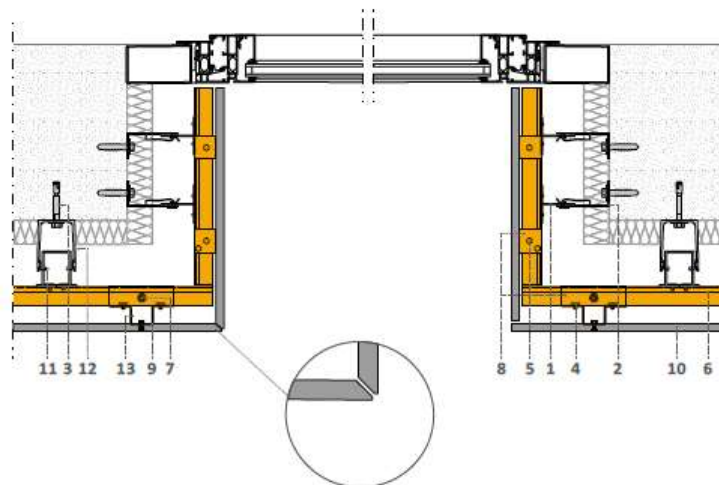


VENTILATED FACADE SYSTEMS

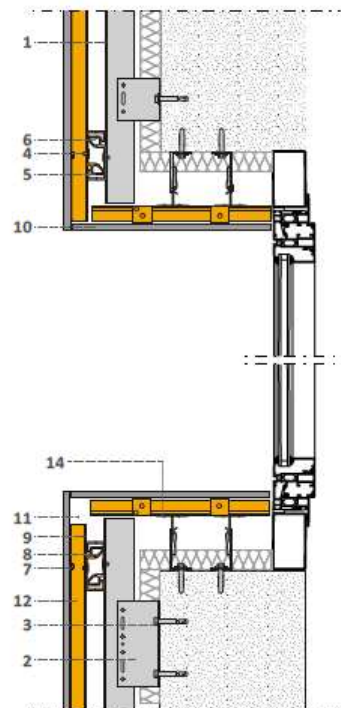
System for 12mm thickness slabs



HORIZONTAL SECTION – WINDOW
 SEZIONE ORIZZONTALE FINESTRA
 HORIZONTALER QUERSCHNITT FENSTER
 SECCIÓN HORIZONTAL VENTANA

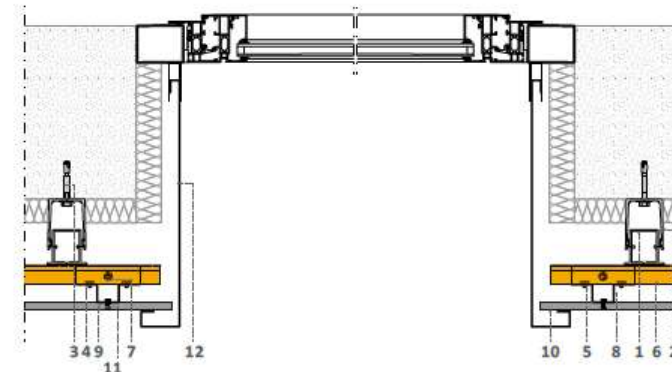


VERTICAL SECTION – WINDOW
 SEZIONE VERTICALE FINESTRA
 VERTIKALER QUERSCHNITT FENSTER
 SECCIÓN VERTICAL VENTANA

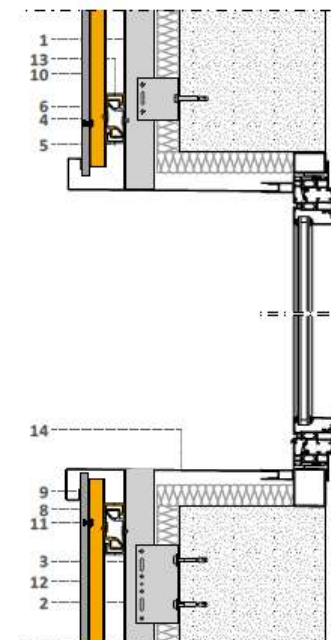


1. **T Vertical profile** | Profilo montante T | Profil Pfosten T | Perfil Montante T
2. **L Bracket (with spring)** | Staffa L (con molla) | L-Bügel (mit Feder) | Estribo L (con muelle)
3. **Dowel** | Tassello | Dübel | Taco
4. **TL Rivet** | Rivetto TL | Niet TL | Remache TL
5. **Blocking screws** | Vite di bloccaggio | Blockierschraube | Tornillo de bloqueo
6. **Oras Profile** | Corrente Oras | Oras-Abschlussleiste | Larguero Oras
7. **Adjustment Screws** | Vite di regolazione | Stellschraube | Tornillo de regulación
8. **Fastener** | Graffa | Klammer | Clip
9. **EPDM Gasket** | Guarnizioni EPDM | EPDM-Dichtung | Junta EPDM
10. **Infinity Slab** | Lastra Infinity | Infinity platte | Placa Infinity
11. **Vertical Profile** | Profilo montante scatolare | Profil Kastenpfosten | Perfil montante rectangular
12. **U Bracket** | Staffa U | U-Bügel | Estribo en U
13. **Q Mullion** | Montante Q | Pfosten Q | Montante Q
14. **Aluminium Flashing Sheet** | Lamiera Sottobancale | Flachblech Aluminium | Alfeizar de aluminio

HORIZONTAL SECTION CLOSER IN ALUMINIUM
 SEZIONE ORIZZONTALE IMBOTTI IN ALLUMINIO
 HORIZONTALER QUERSCHNITT ALUMINIUMVERSCHLÜSSEN
 SECCIÓN HORIZONTAL CIERRES EN ALUMINIO



VERTICAL SECTION CLOSER IN ALUMINIUM
 SEZIONE VERTICALE IMBOTTI IN ALLUMINIO
 VERTIKALER QUERSCHNITT ALUMINIUMVERSCHLÜSSEN
 SECCIÓN VERTICAL CIERRES EN ALUMINIO



1. **T Vertical profile** | Profilo montante T | Profil Pfosten T | Perfil Montante T
2. **L Bracket (with spring)** | Staffa L (con molla) | L-Bügel (mit Feder) | Estribo L (con muelle)
3. **Dowel** | Tassello | Dübel | Taco
4. **TL Rivet** | Rivetto TL | Niet TL | Remache TL
5. **Blocking screws** | Vite di bloccaggio | Blockierschraube | Tornillo de bloqueo
6. **Oras Profile** | Corrente Oras | Oras-Abschlussleiste | Larguero Oras
7. **Adjustment Screws** | Vite di regolazione | Stellschraube | Tornillo de regulación
8. **Fastener** | Graffa | Klammer | Clip
9. **EPDM Gasket** | Guarnizioni EPDM | EPDM-Dichtung | Junta EPDM
10. **Infinity Slab** | Lastra Infinity | Infinity platte | Placa Infinity
11. **Vertical Profile** | Profilo montante scatolare | Profil Kastenpfosten | Perfil montante rectangular
12. **U Bracket** | Staffa U | U-Bügel | Estribo en U
13. **Q Mullion** | Montante Q | Pfosten Q | Montante Q
14. **Aluminium Sill** | Bancale in Alluminio | Regelklammer mit Fensterbank aus Aluminium | Alfeizar de aluminio





glued facades



INFINITY™ **project**
The engineered surface. **division**

GLUED FACADE



The use of ceramic materials directly on walls, both inside and outside, is particularly common worldwide. Infinity slabs are ideal for this, creating added value for the building and offering significant benefits, including:

- Light weight: less than 16 kg/sq.m. dead weight
- Easy and economical to install compared to other types of cladding systems
- Weather protection for buildings
- Top fire-resistance level (because there are no plastic or chemical components)
- No deterioration caused by time or weather
- No maintenance required for the facade
- Excellent aesthetic potential
- Wide range of colours and finishes
- Large size able to cover the string courses



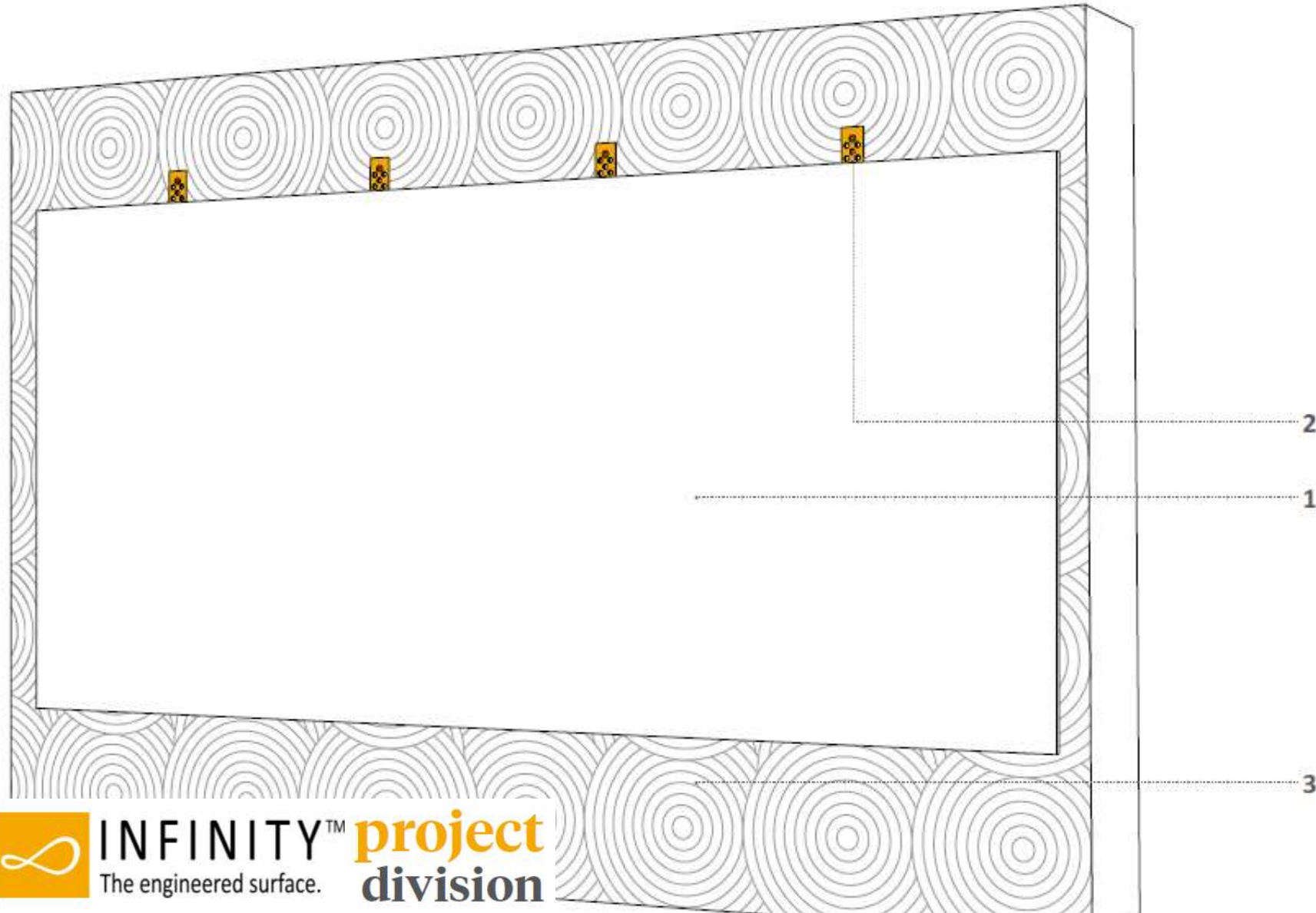
GLUED FACADE



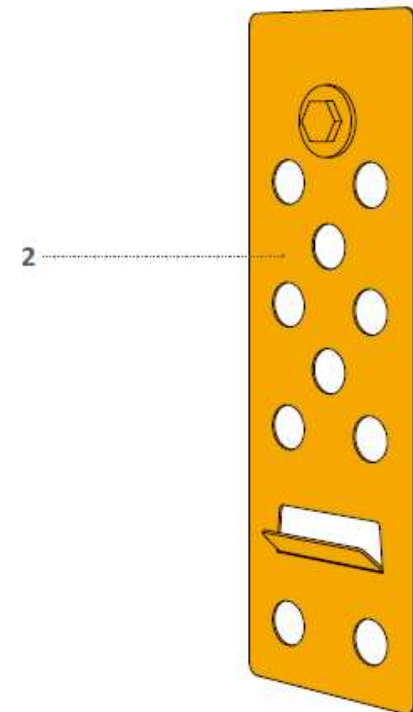
For Infinity, safety is of the essence; the recent **UNI 11493** standard governing “Ceramic Tiling on Floors and Walls” contains the following indications regarding ceramic wall coverings:

- “Facades are external wall tiling systems with a height of more than 3 m”
- “For tiles with a long side of more than 30 cm, project designers must consider whether it is necessary to adopt a suitable mechanical safety anchoring system”.

GLUED FACADE

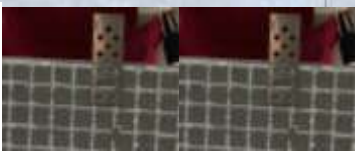


1. **Infinity Slab** | Lastra Infinity | Infinity-Platte | Placa Infinity
2. **Safety hook** | Gancio di sicurezza | Sicherheitshaken | Gancho de seguridad
3. **Adhesive** | Adesivo | Kleber | Adhesivo



BRACKET DETAIL
DETTAGLIO DEL GANCIO MECCANICO DI SICUREZZA
DETAIL DES HAKENS





RAISED FLOOR



Modern construction technologies increasingly require **dry-laid, flexible, easily installable flooring systems**. Infinity offers a series of complete systems both for finishing interior flooring and for technical raised floors and slabs.

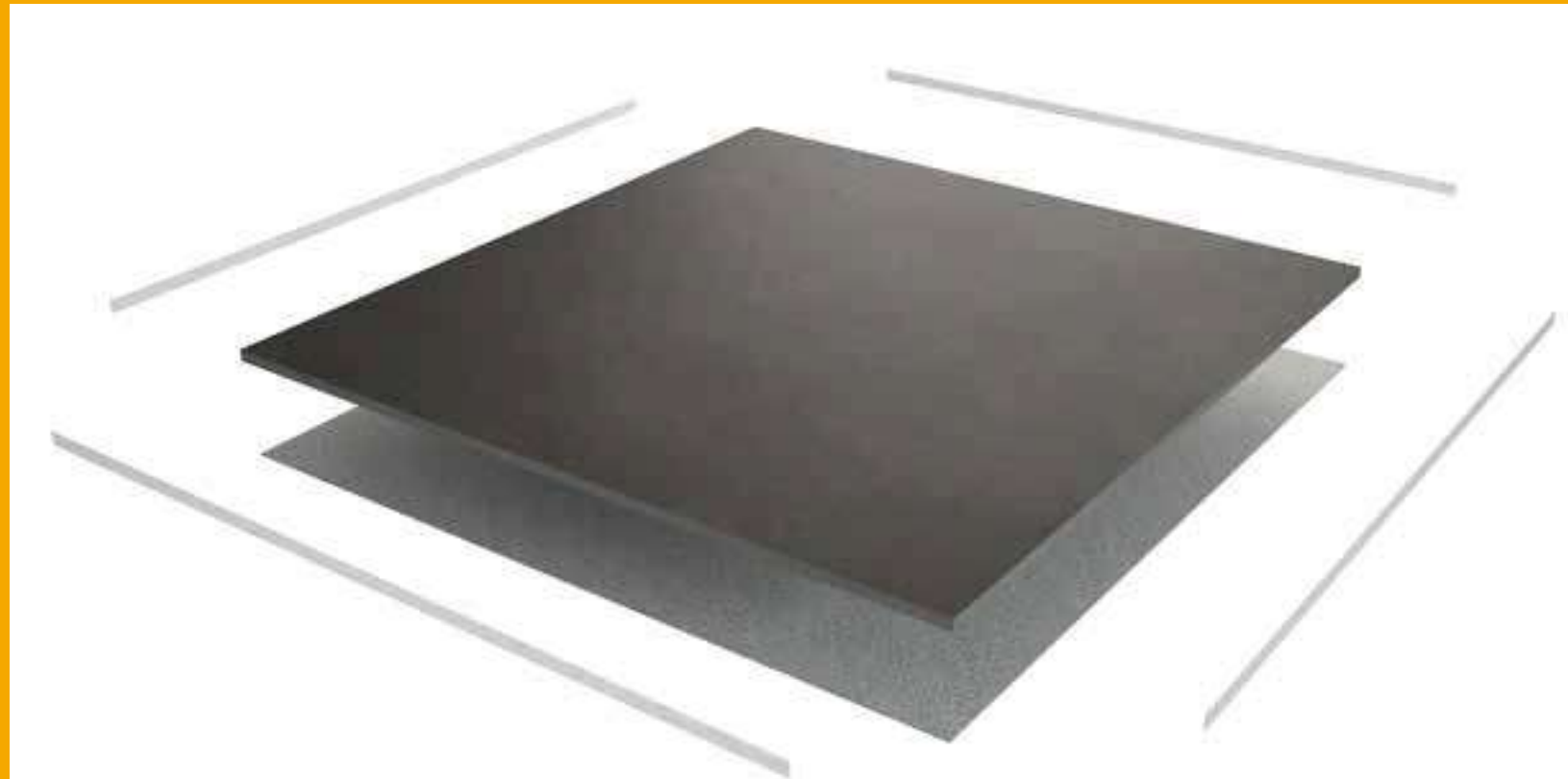


RAISED FLOOR – LOOSE LAID



The sub-size Infinity slabs obtained by cutting (160x160cm, 160x80cm, 80x80cm) can be supplied for specific projects with a loose-lay finish, which allows for the slabs to be installed on an existing floor, or a levelled surface, without the use of glue or grout. This type of new floor is:

- **Extremely quick to lay**
- **Usable immediately**
- **Non-invasive**
- **Reversible and reusable**



RAISED FLOOR – RAISED FLOOR



SIZE: 80x80cm

Components of the system:

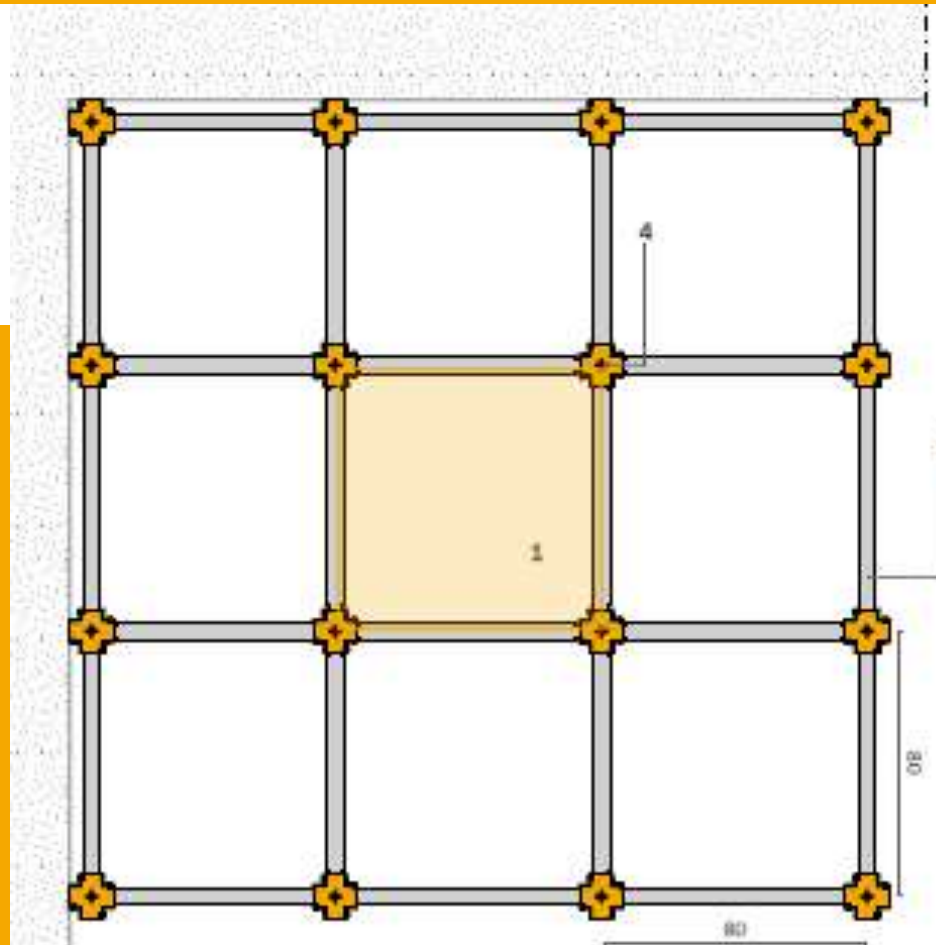
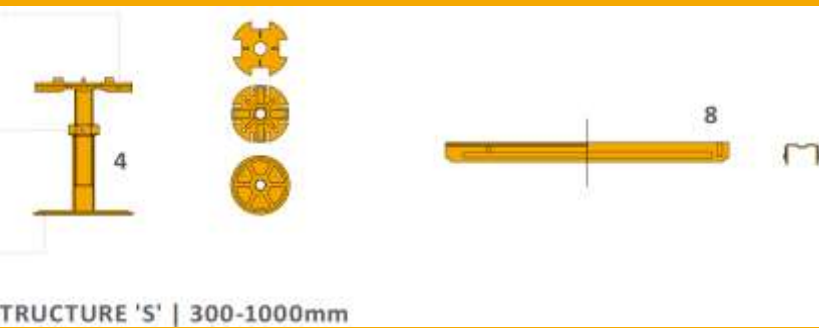
- Structure in galvanized steel, made up of vertical supports and connecting cross-pieces, able to adjust height from 10cm to over 1m
- High-density calcium Sulphate panel
- Top finish with Infinity slabs
- Perimeter edge in self-extinguishing plastic material that allows for the creation of precise hermetically sealed joints that keep out dust and dirt.



RAISED FLOOR – RAISED FLOOR



Components overview



Layout:

80x80 CM PRE-FINISHED PANELS

PANNELLI PREFINITI IN FORMATO 80x80CM
VORGEFERTIGTE PLATTEN IM FORMAT 80x80CM
PANELES PREACABADOS DE FORMATO 80x80CM

PANEL: 80x80 | STRUCTURE STEP: 80x80cm
PANNELLO 80x80 | PASSO STRUTTURALE: 80x80CM
PLATTE 80x80 | STRUKTUR ABSTAND: 80x80CM
PLACA 80x80 | PASO ESTRUCTURAL: 80x80CM

RAISED FLOOR – RAISED FLOOR 2.0



Panel composed of a structural part and a finishing part, supplied and installed separately.

Components of the system:

- Structure in zinc-coated steel, made up of vertical supports and connecting cross-pieces, able to adjust height from 10cm to over 1m
- High-density calcium sulphate panel. Panels may be 60x60cm or 60x120cm. Depending on specific requirements, it is possible to opt for single panels, all of them inspectable **(A)** or panels with tongue and groove edges **(B)** that create a “raised screed”.
- **Finish with loose-lay Infinity slabs**



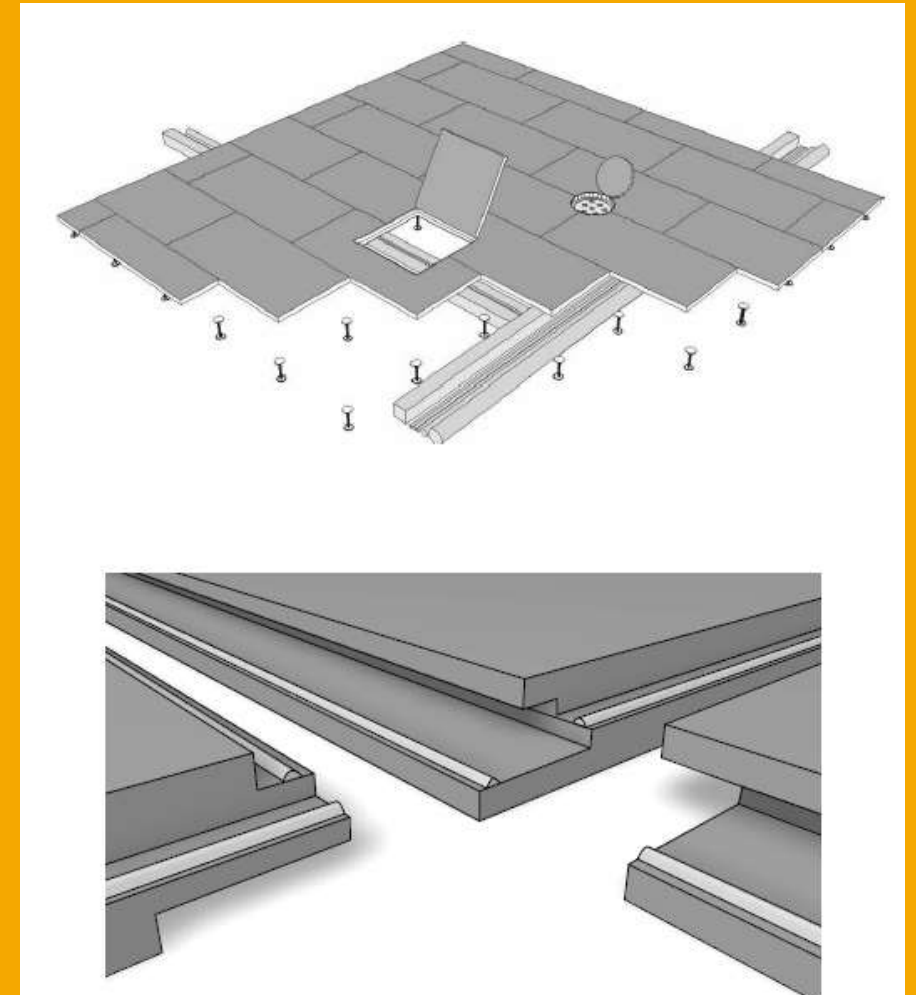
RAISED FLOOR – RAISED FLOOR 2.0



Option _ (A)



Option _ (B)



Layout:

STRUCTURAL PANEL AND LOOSE-LAY FINISHING

E PAVIMENTI AUTOPOSANTI

STRUKTURELLEN PLATTEN UND TROCKENVERLEGTE FUSSBÖDEN

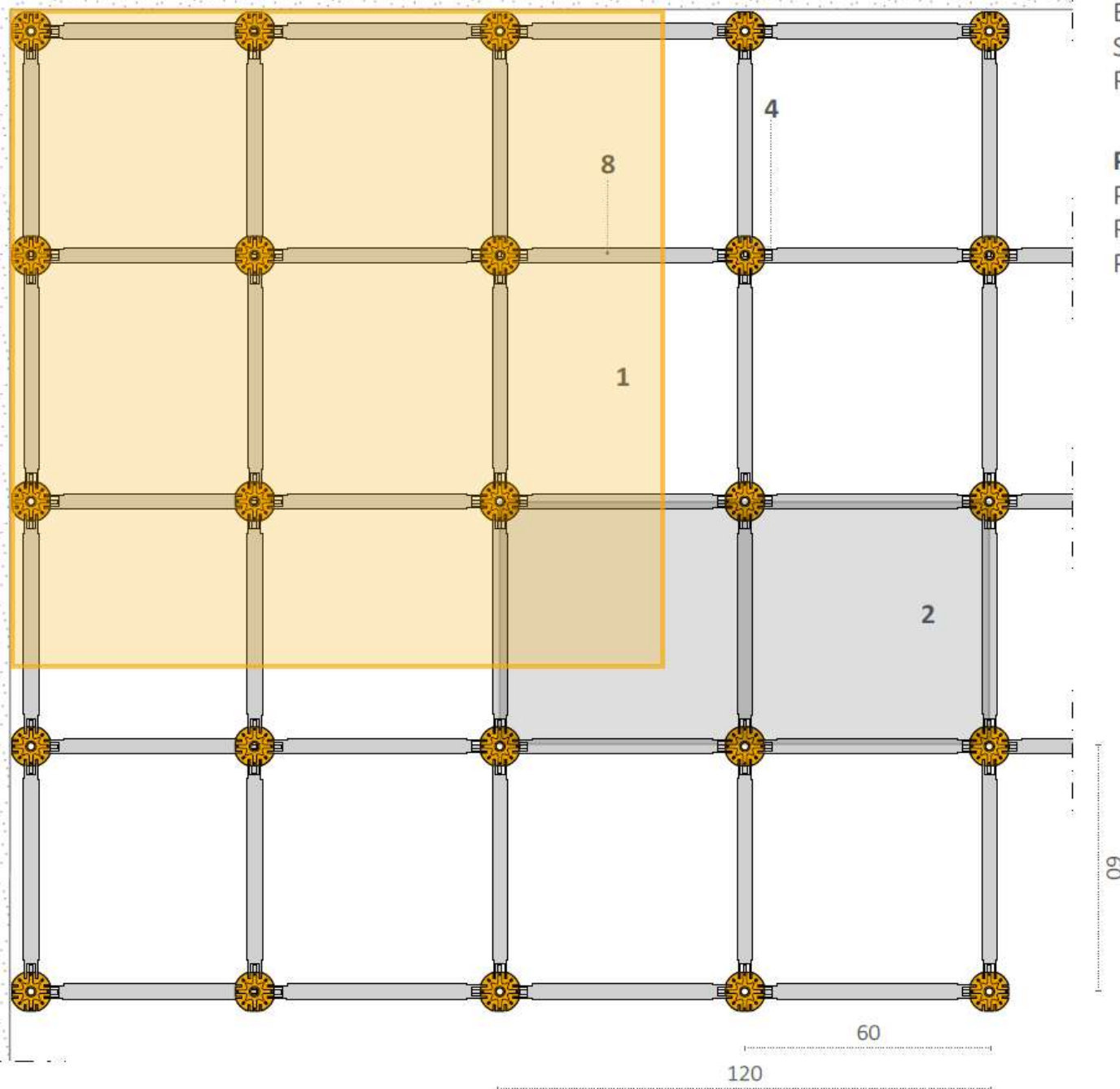
PANELES ESTRUCTURALES Y SUELOS DE AUTOCOLOCACIÓN

PANEL: 60x120 | STRUCTURE STEP: 60X60

PANNELLO 60X120 | PASSO STRUTTURALE: 60X60

PLATTE 60X120 | STRUKTUR ABSTAND: 60X60

PLACA 60X120 | PASO ESTRUCTURAL: 60X60



1. **Infinity slabs** | Lastra infinity | Infinity-Platte | Placa Infinity
2. **Pre-finished panel composed of calcium sulphate and Infinity stoneware** | Pannello prefinito composto da solfato di calcio e gres infinity | Aus Calciumsulfat und Feinsteinzeug Infinity bestehende vorgefertigte Platte | Placa preacabada formada por sulfato de calcio y gres infinity
3. **Panel in unprocessed calcium sulphate** | Pannello in solfato di calcio grezzo e bordi maschiati | Platte aus rohem Calciumsulfat | Placa de sulfato de calcio bruto
4. **Support** | Supporto | Träger | Soporte
5. **Base of the support** | Base del supporto | Trägerbasis | Base del soporte
6. **Head of the support** | Testa del supporto | Trägerkopf | Cabeza del soporte
7. **Adjustment nut** | Dado di regolazione | Einstellmutter | Tuerca de regulación
8. **Crosspiece** | Traversina | Querträger | Travesaño
9. **Tubular crosspiece** | Traversina tubolare | Röhrenförmiger Querträger | Travesaño tubular



INFINITY™ **project**
The engineered surface. **division**

PERSONAL PORTFOLIO





















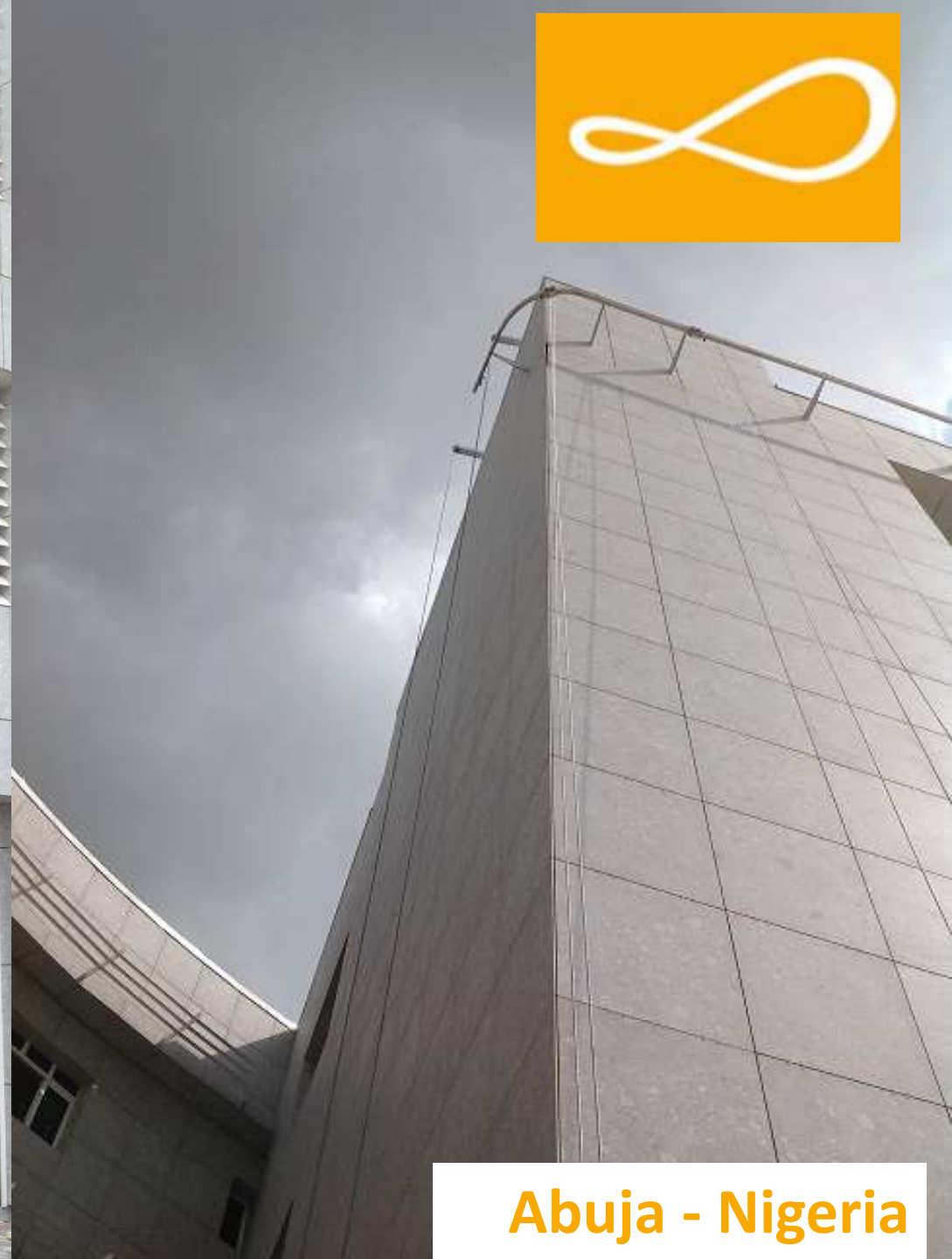
INFINITY™ project
The engineered surface. division

KSA



























INFINITY™ project
The engineered surface. division



Helsingborg - Sweden













BC
Banco de Costa Rica



Join the conversation

infinitysurfaces.it